

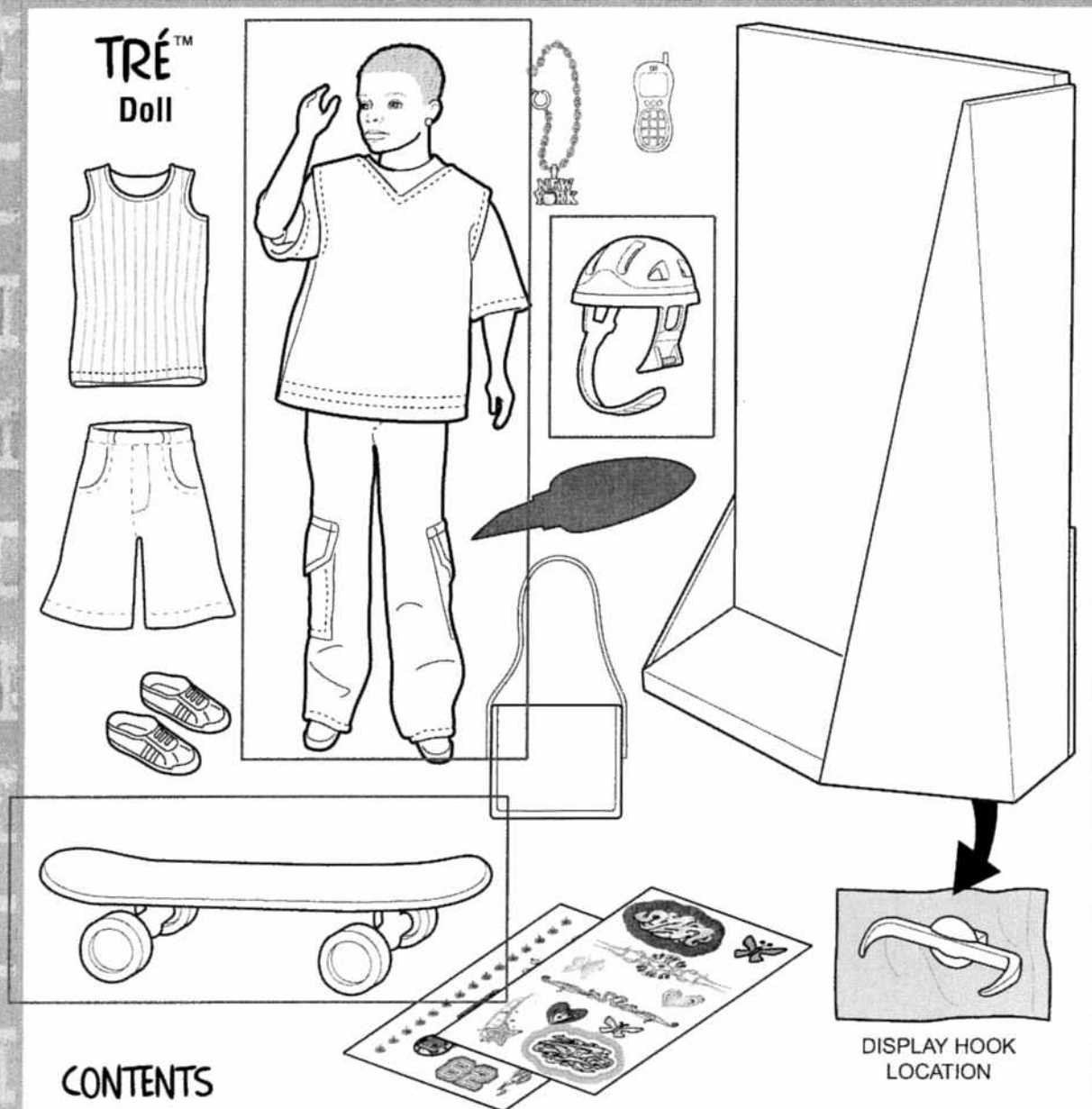
6+

FLAVAS



C1974-0920G1

INSTRUCTIONS



CONTENTS

Please remove everything from the package and compare to the contents shown here. If any items are missing, please call 1-800-524-TOYS.

Keep these instructions for future reference as they contain important information.

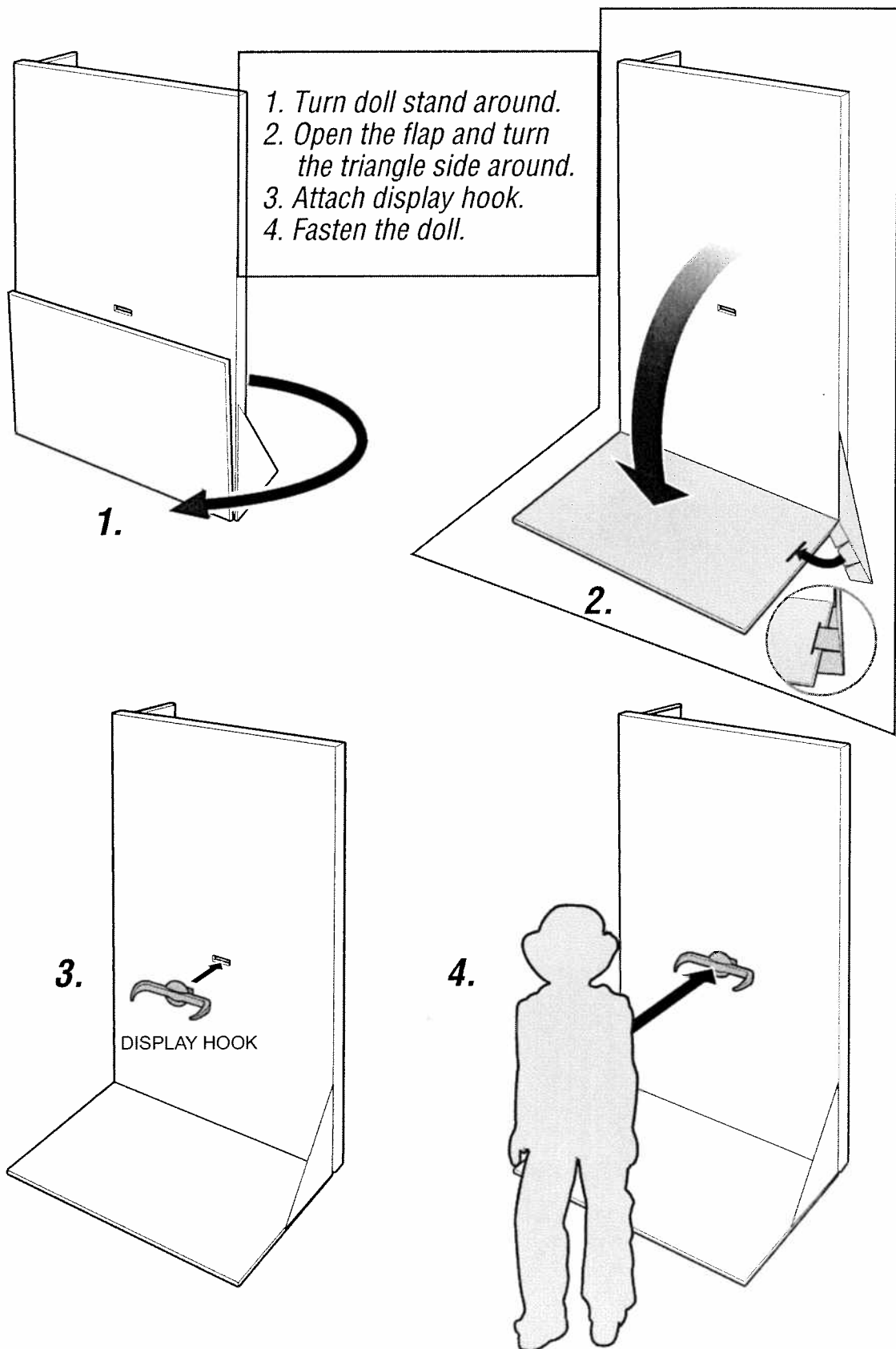
Fashions, colors and decorations may vary from those shown.

Retain this address for future reference:

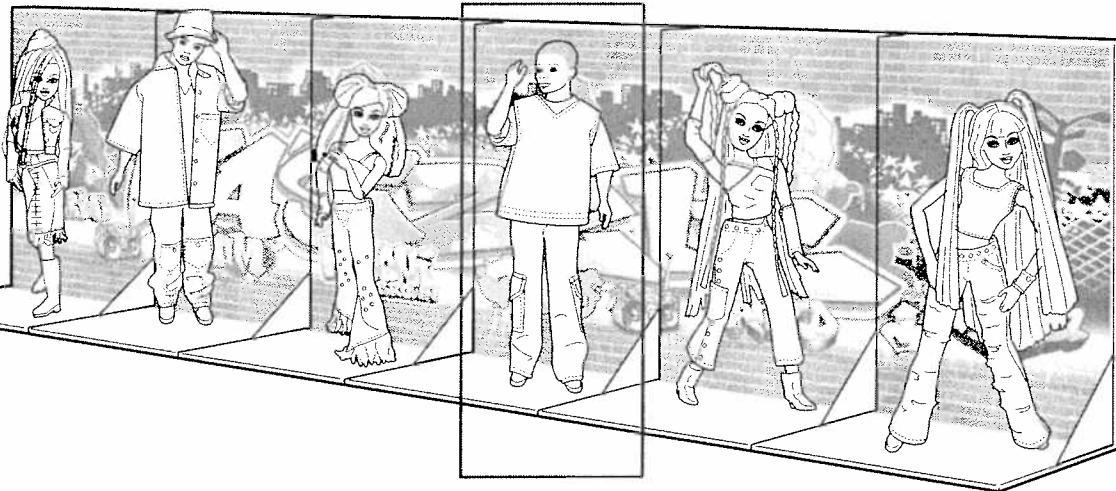
© 2003 Mattel, Inc., El Segundo, CA 90245 U.S.A. All Rights Reserved.

DISPLAY

Create a spot for your doll to "hang out" on the block.



C1955 P. Bo™ C1969 Liam™ C1965 Kiyoni Brown™ C1974 Tré™ C1960 Happy D™ B7583 Tika™



GET THE WHOLE CREW AND PLACE THEM
SIDE BY SIDE FOR A COOL MURAL!

NOW, THEY CAN "HANG" TOGETHER!

*Dolls with their doll stand sold separately and subject to availability.
Fashions, colors and decorations may vary from those shown.*

Mattel Canada Inc., Mississauga, Ontario L5R 3W2. You may call us free at 1-800-665-6288.

Mattel U.K. Ltd., Vanwall Business Park, Maidenhead SL6 4UB. Helpline 01628500303.

Mattel Australia Pty., Ltd., Richmond, Victoria. 3121.Consumer Advisory Service - 1300 135 312.

Mattel East Asia Ltd, Room 1106, South Tower, World Finance Centre, Harbour City, Tsimshatsui, HK, China

Diimport & Diedarkan Oleh: Mattel SEA Ptd Ltd.(993532-P) Lot 13.5, 13th Floor, Menara Lien Hoe, Persiaran Tropicana Golf Country Resort, 47410 PJ. Tel:03-78803817, Fax:03-78803867.

Mattel, Inc., El Segundo, CA 90245 U.S.A. Consumer Affairs 1 (800) 524-Toys.

CONSUMER INFORMATION

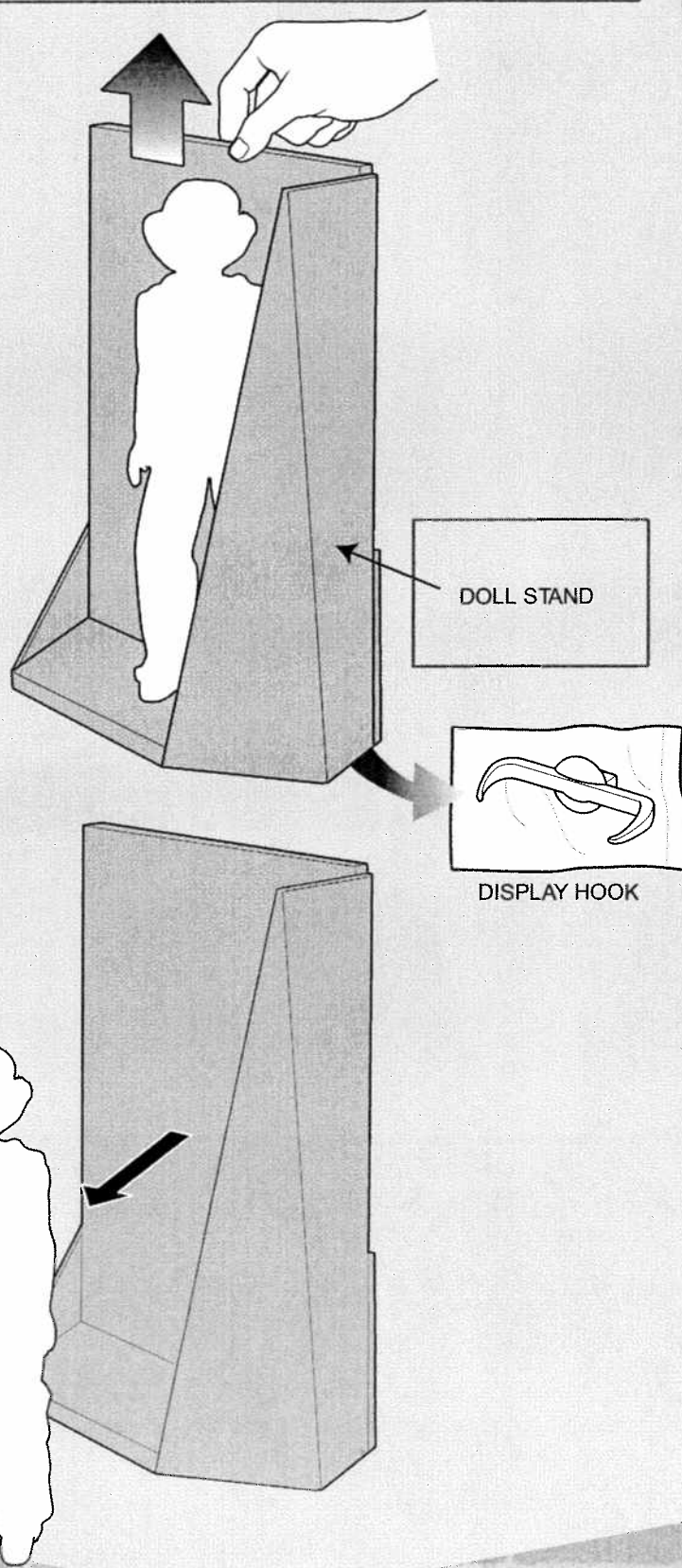
YOU CAN TELL IT'S MATTEL!™ CALL us toll-free or write with any comments or questions about our products or service. Monday-Friday 8:00 a.m.-6:00 p.m. Eastern Time. Outside U.S.A., see telephone directory for Mattel listing.

Consumer Relations, Mattel, Inc.
333 Continental Blvd.
El Segundo, CA 90245 USA

1(800) 524-TOYS

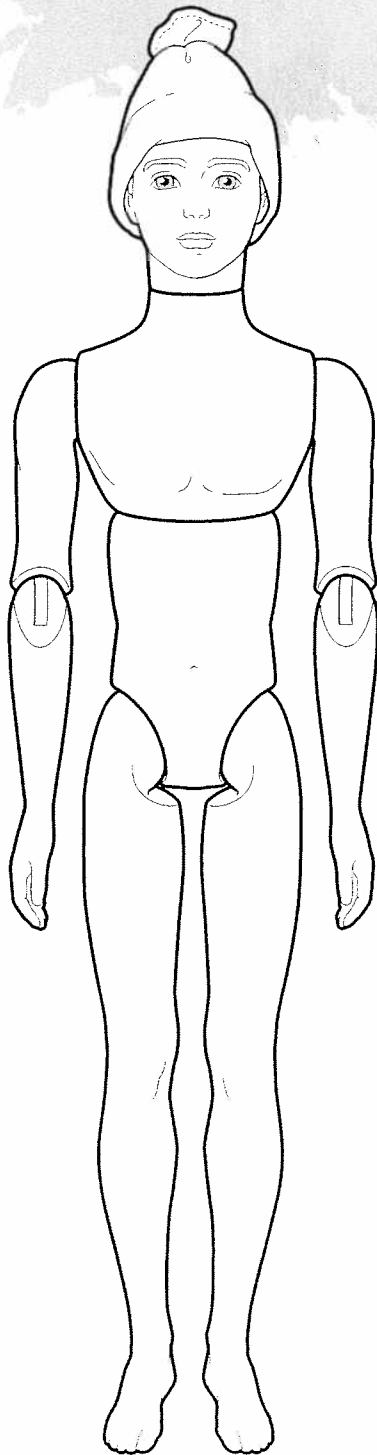
WE ARE DEDICATED TO QUALITY PRODUCTS.

Pull doll stand out from the box
and carefully remove the DISPLAY HOOK from the bottom of the doll stand.
Doll stand and display hook will be used for play, display and storage.



EXPRESS YOUR ATTITUDE

Doll can be positioned in many poses.
Doll, hair style, fashions and accessories vary and
may differ from the items illustrated here.
The doll functions are the same.





Accessories vary and may differ from the items illustrated here

Make sure the selected doll fashion is clean and dry. Remove the paper backing sheet from the temporary art decal sheet. Place the fashion and the selected decal (FACE UP) on a hard surface. Hold decal in place and rub burnisher back and forth to transfer decal onto the doll's fashion.

REMOVAL: Decal should peel off. If necessary, hand wash with water and mild soap.

NOTE: Art decals are for use on doll fashions only.

